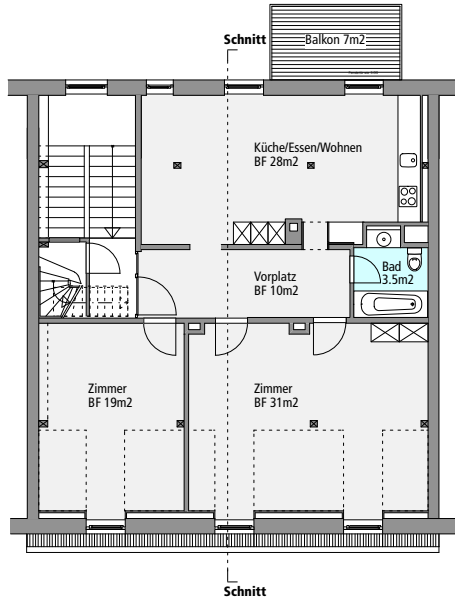
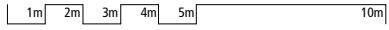
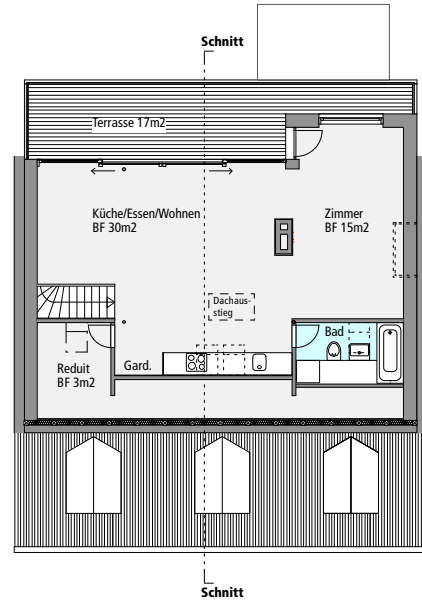


Säntisstrasse, 8008 Zürich | Umbau 4. OG, Ausbau Estrichgeschoss
Grundrisse und Schnitte 1:200

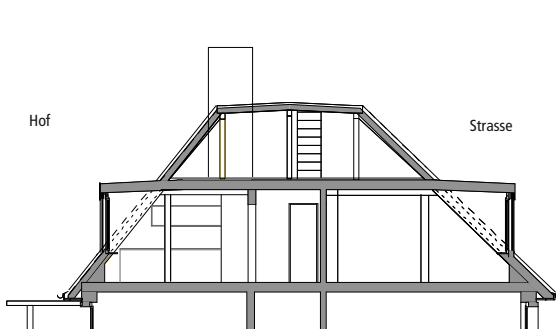
Architektur Atelier Christoph Zihlmann, 8037 Zürich | 2011



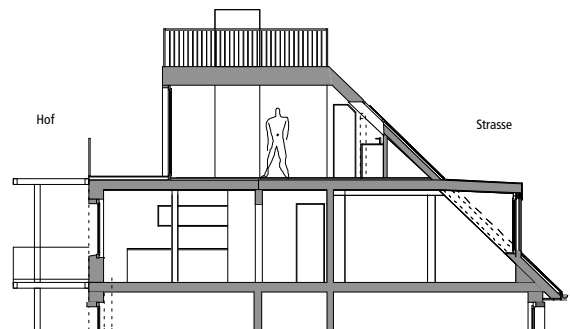
4.OG nach Umbau



DG nach Umbau



Schnitt vor Umbau



Schnitt nach Umbau